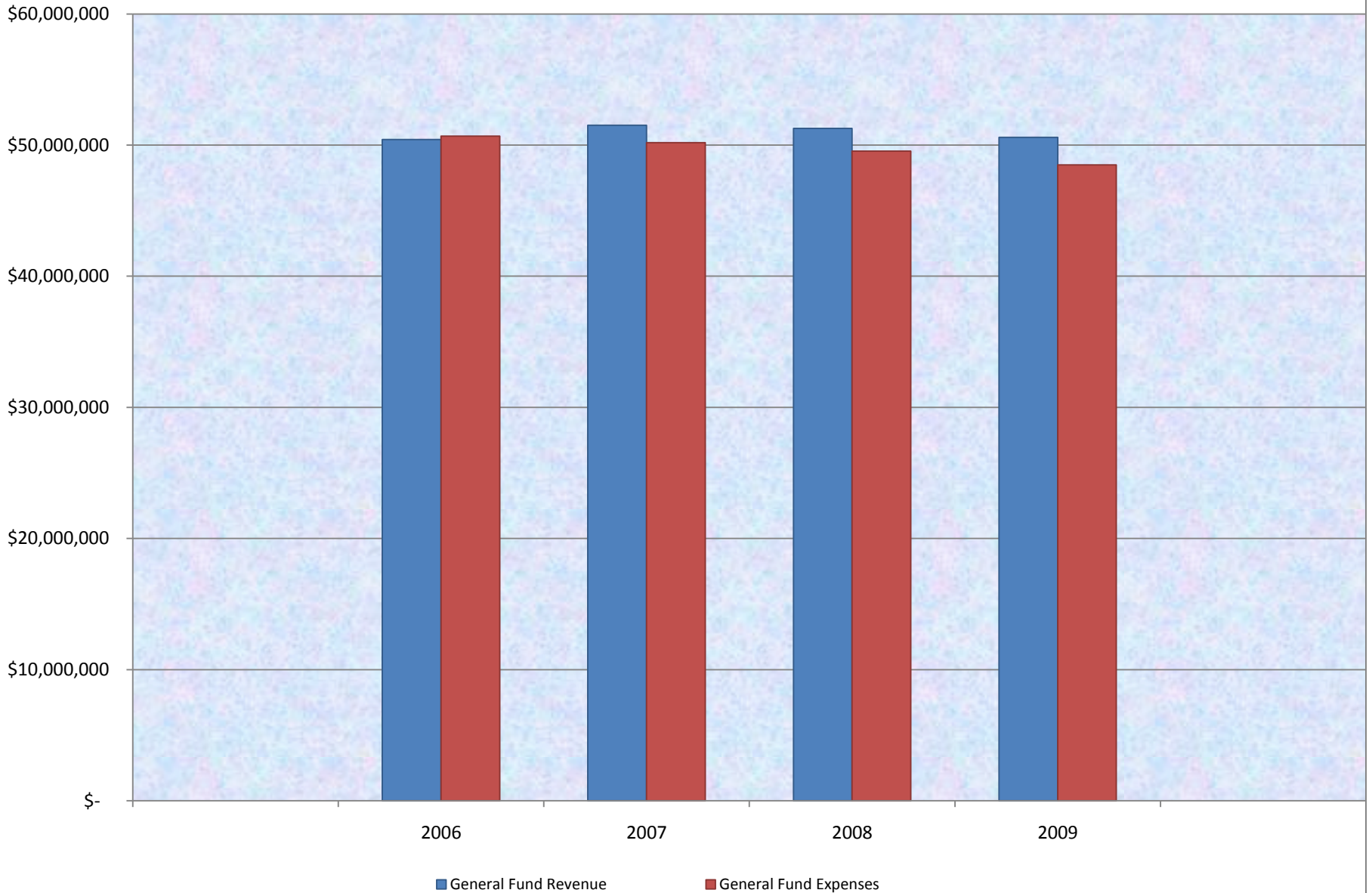


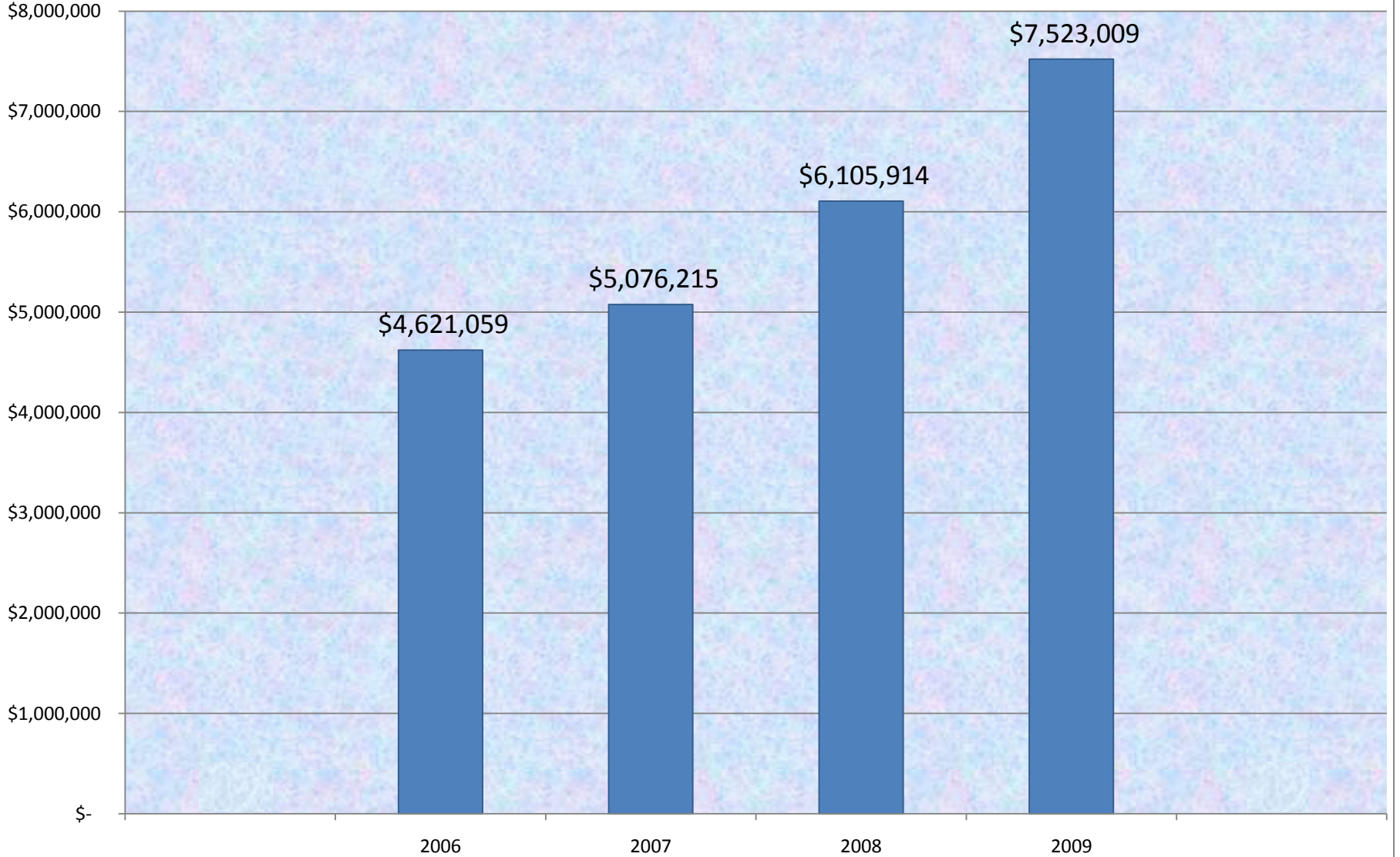
Carman-Ainsworth

Audit Analysis

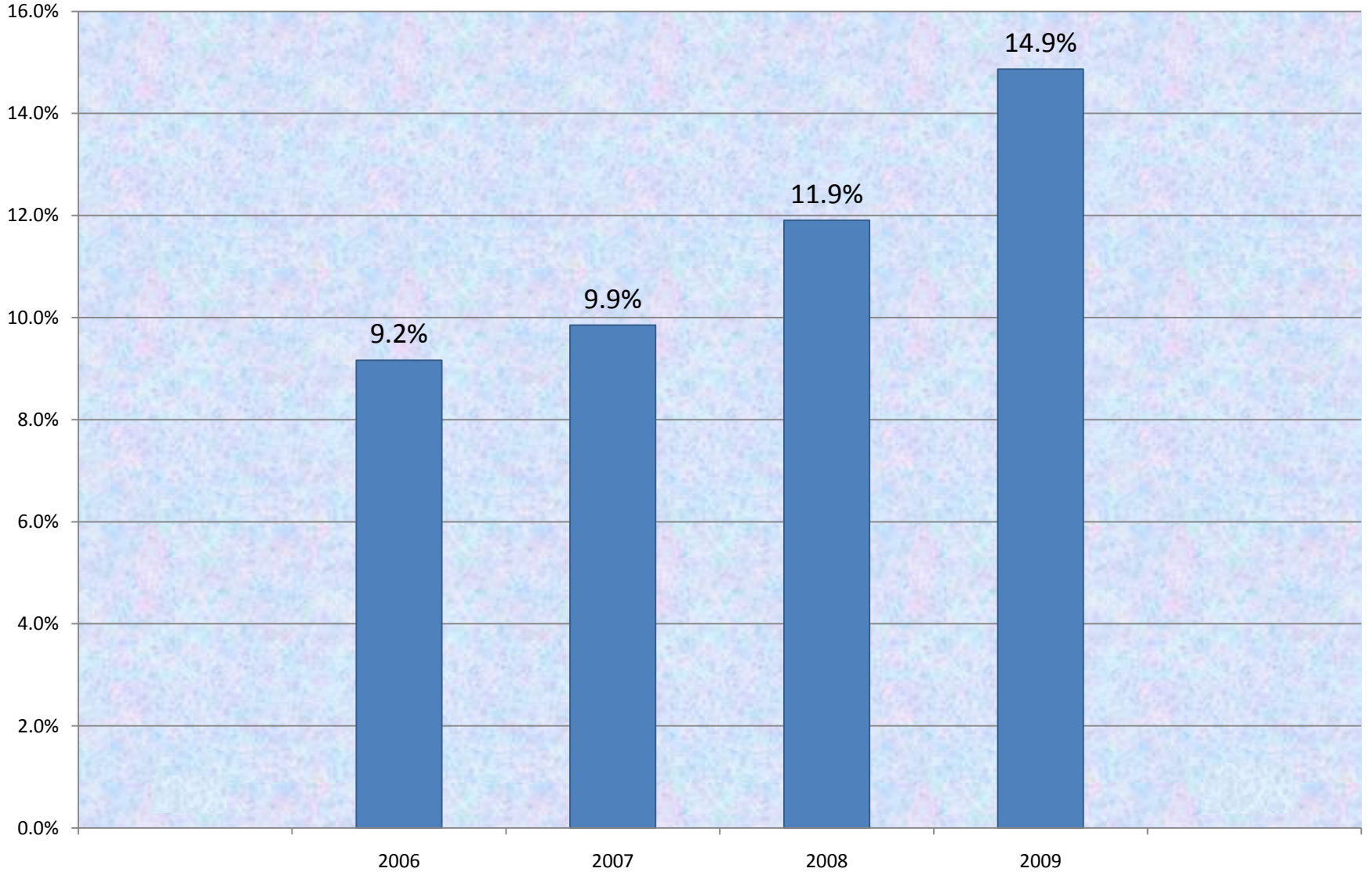
General Fund Revenue and Expenditures



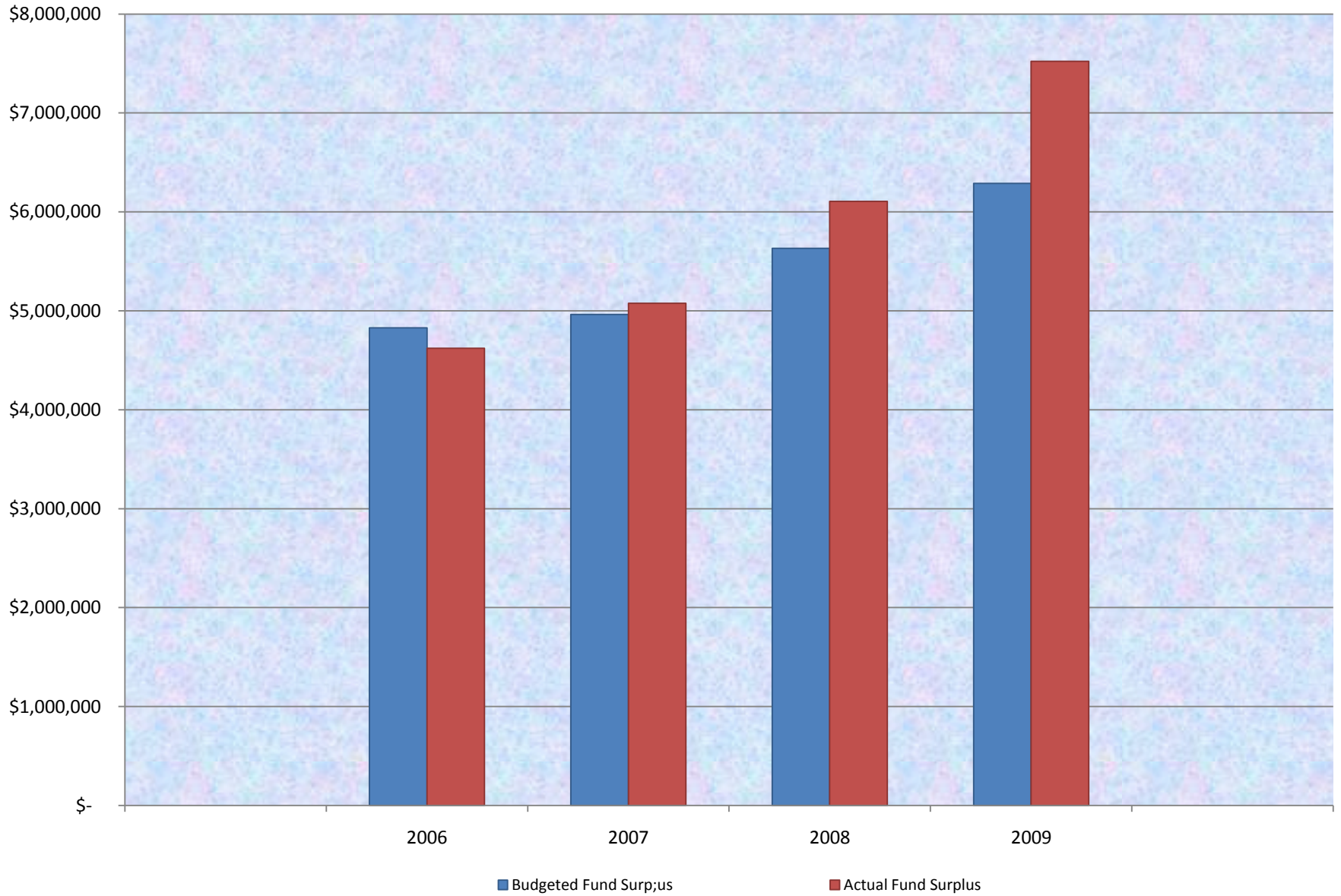
General Fund Surplus



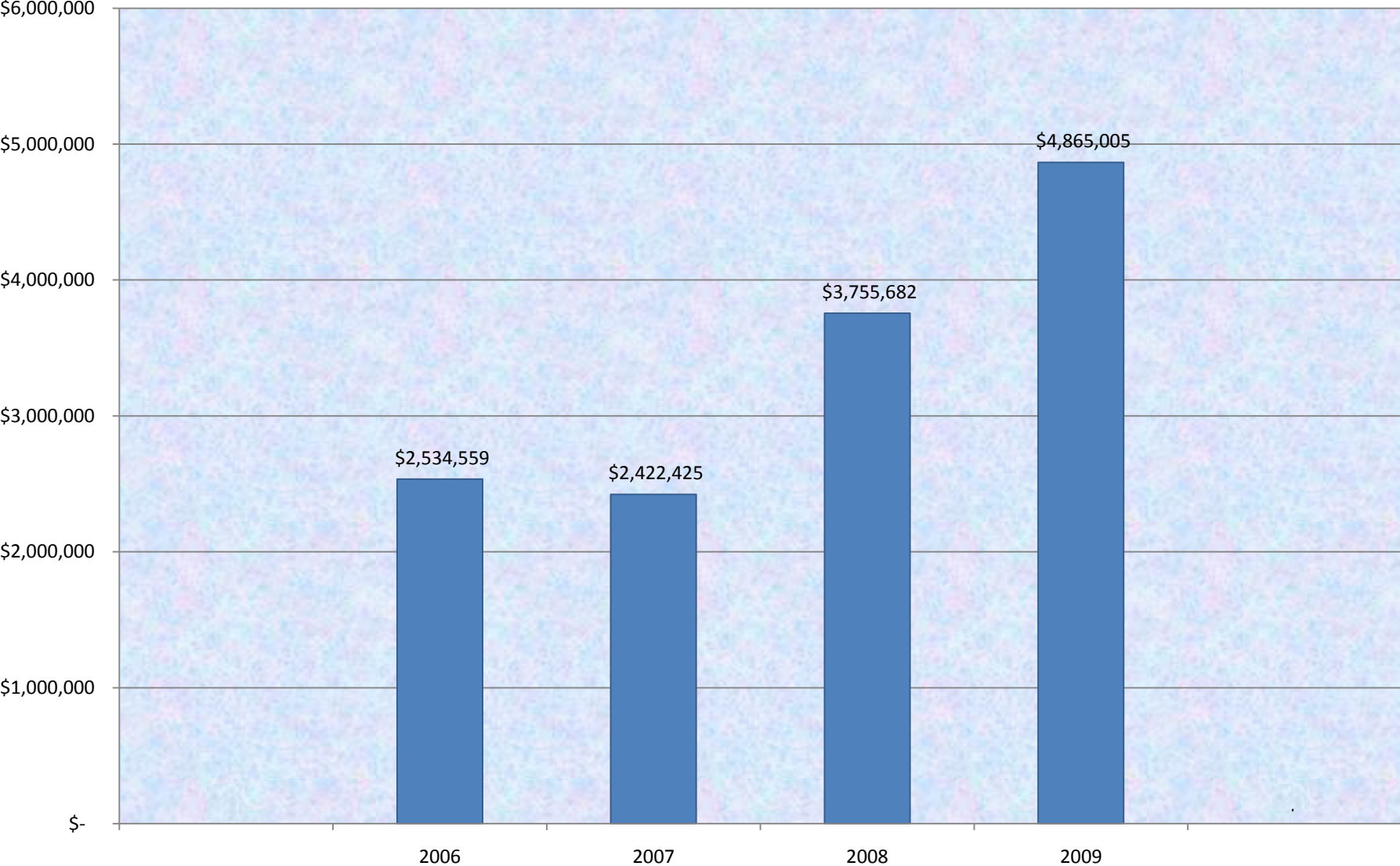
Fund Surplus as a Percentage of Revenue



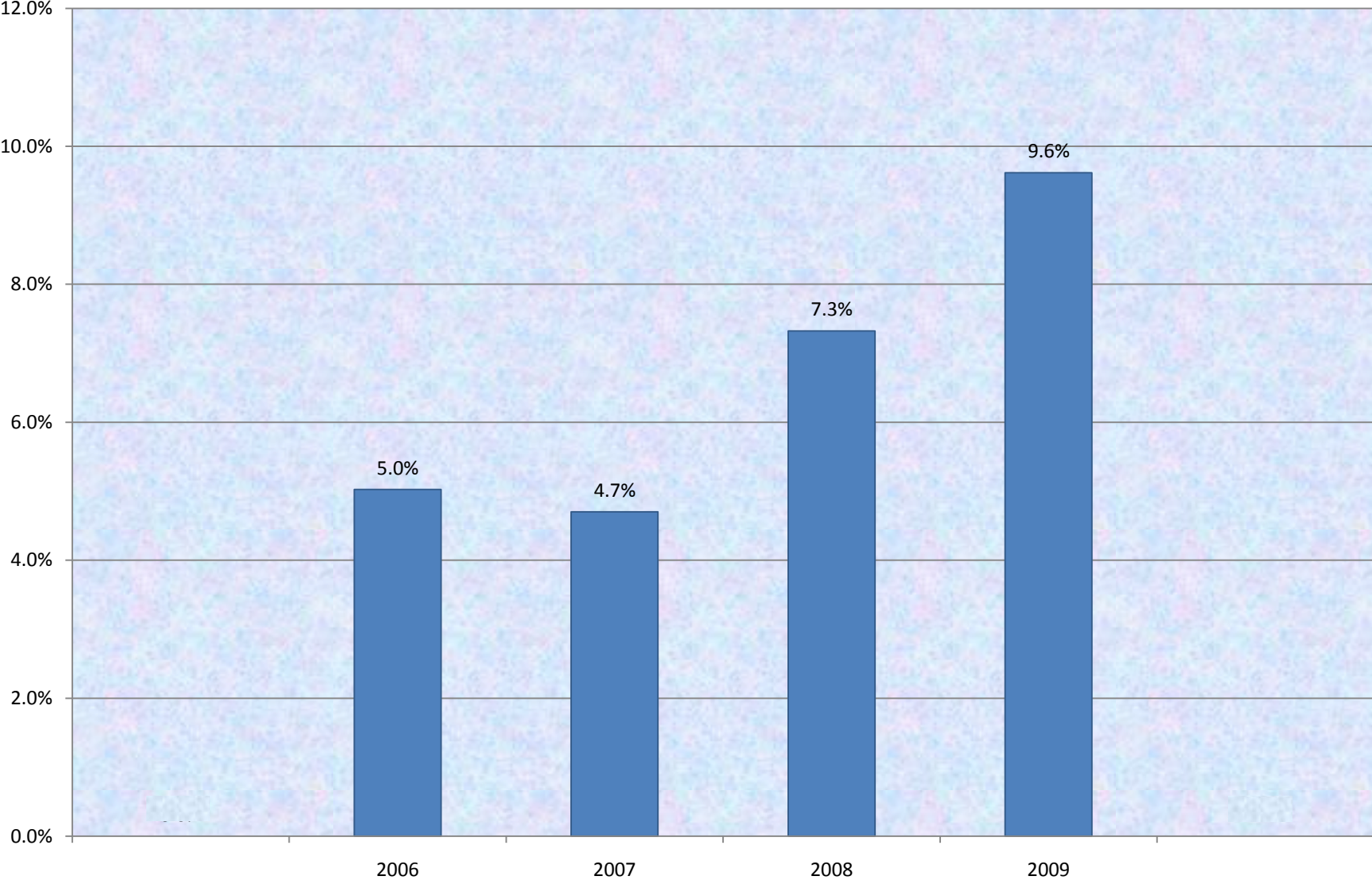
Budgeted and Actual Fund Surplus



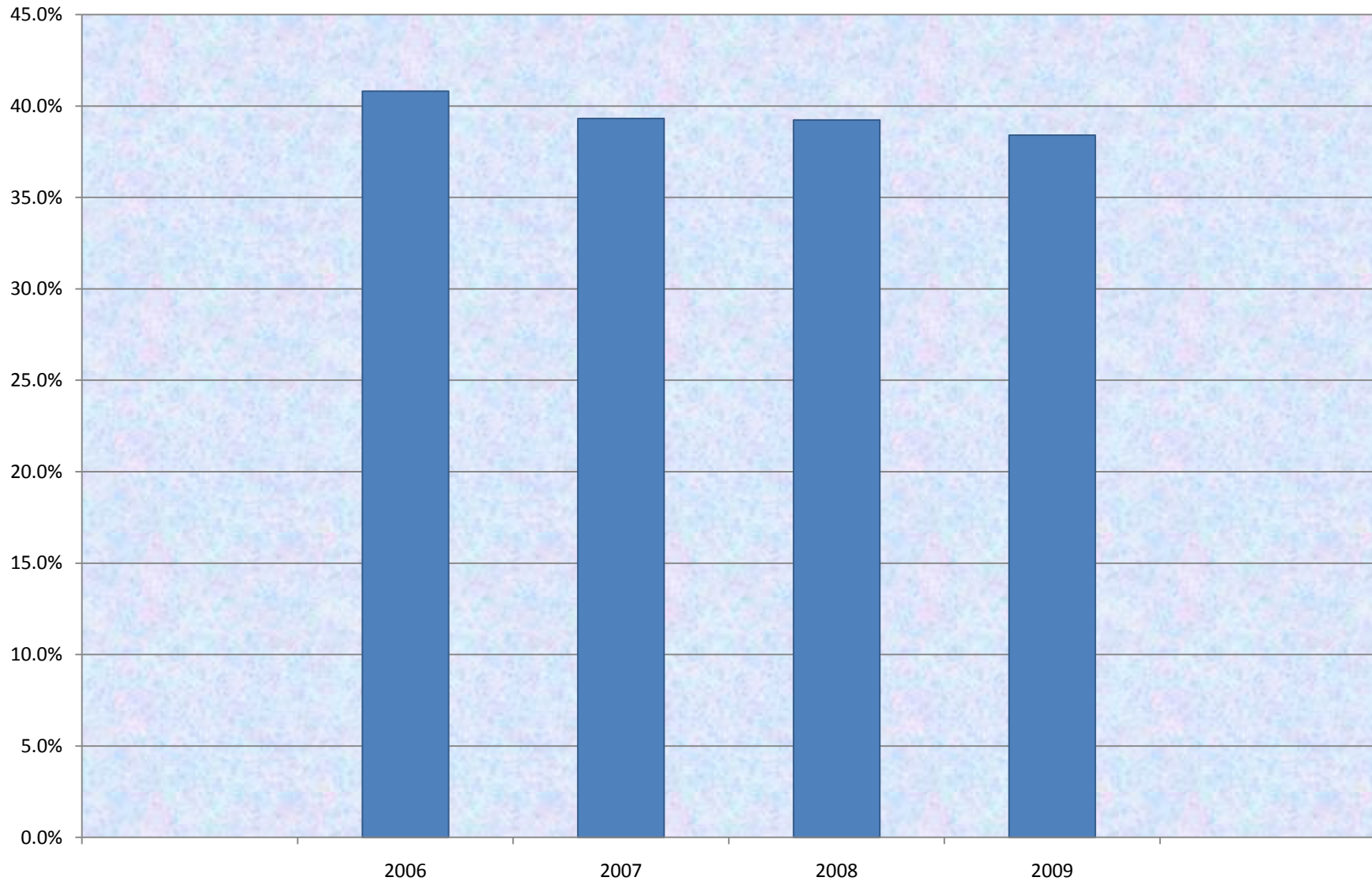
Cash on Hand at the Close of the Fiscal Year



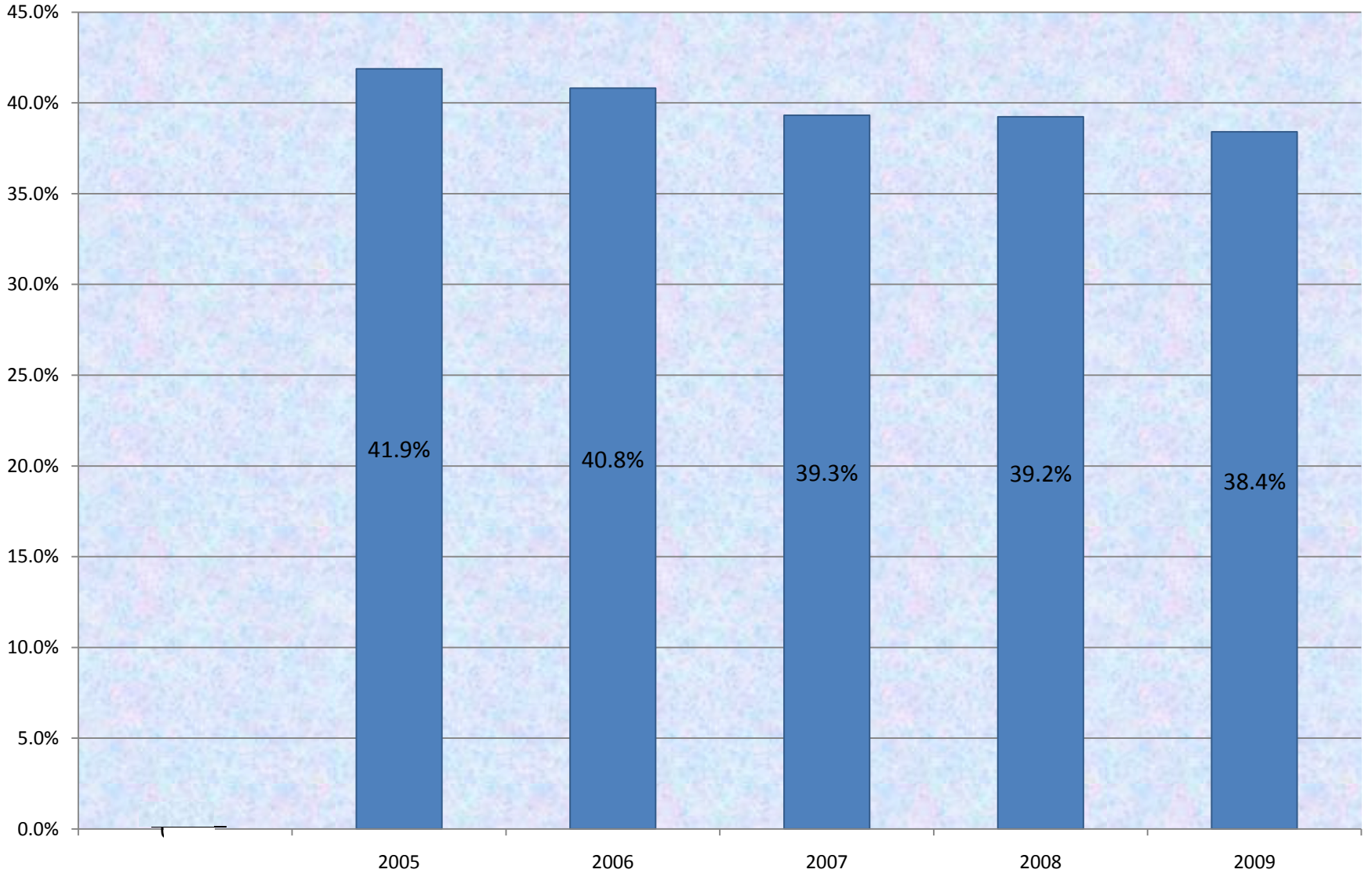
Cash on Hand at the Close of the Fiscal Year as a Percent of Revenue



Instructional Salary as a Percentage of Revenue



Instructional Salary as a Percentage of Revenue



Instructional Compensation as a Percentage of Revenue

